

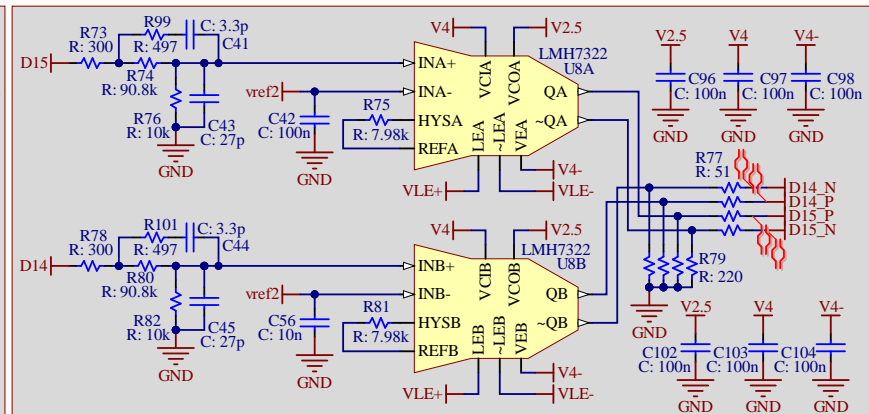
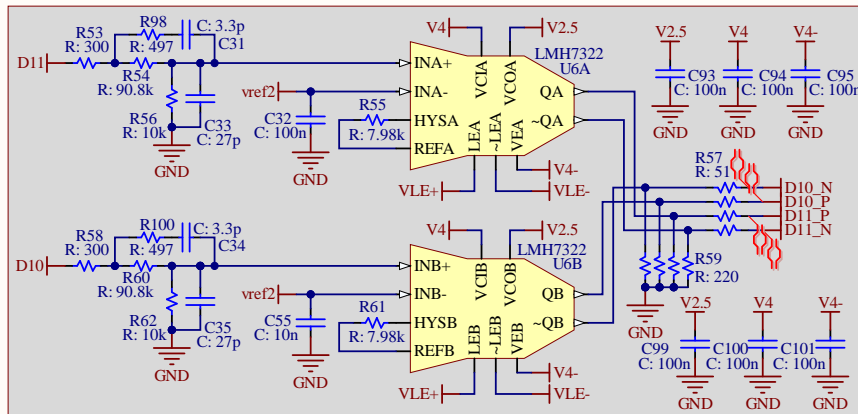
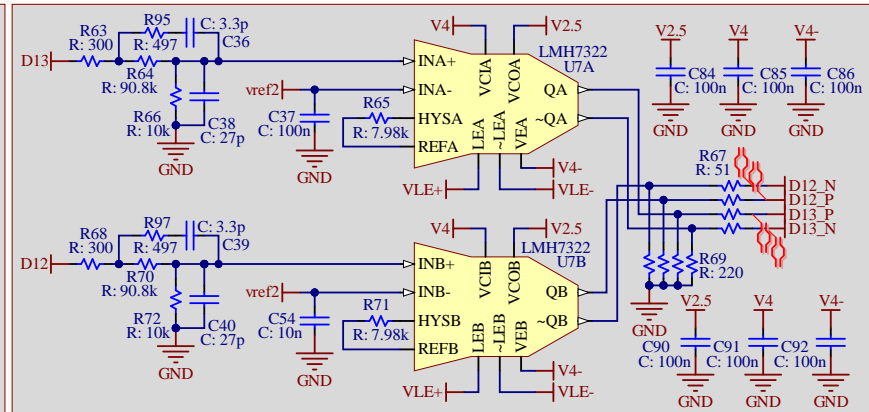
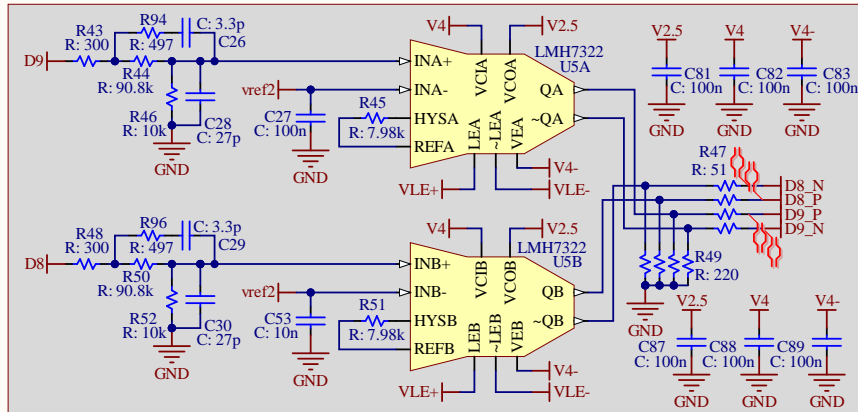
Title		
Rigol DHO900 Probe Logic Analyzer		
Size	Number	Revision
A4	240310	2
Date:	3/23/2024	Sheet of 1
File:	D:\Soafire\...\Rigol DHO-PLA page 1.SchDoc	Drawn By:

1

2

3

4



Title		
Rigol DHO900 Probe Logic Analyzer		
Size	Number	Revision
A4	240310	2
Date:	3/23/2024	Sheet of 2
File:	D:\Soafile\...\Rigol DHO-PLA page 2.SchDoc	
Drawn By:		

1

2

3

4



Comment	Description	Designator	Footprint	LibRef	Quantity
Capacitor_N	Nonpolarized Capacitor	C1, C2, C3, C4, C5, C6, C7, C8, C12, C13, C14, C15, C16, C17, C18, C19, C20, C21, C22, C23, C24, C25, C26, C27, C28, C29, C30, C31, C32, C33, C34, C35, C36, C37, C38, C39, C40, C41, C42, C43, C44, C45, C49, C50, C51, C52, C53, C54, C55, C56, C57, C58, C59, C60, C61, C62, C63, C64, C65, C66, C67, C68, C69, C70, C71, C72, C73, C74, C75, C76, C77, C78, C79, C80, C81, C82, C83, C84, C85, C86, C87, C88, C89, C90, C91, C92, C93, C94, C95, C96, C97, C98, C99, C100, C101, C102, C103, C104	0603_C	Capacitor_N	98
Capacitor_N	Nonpolarized Capacitor	C9, C10, C11	0805_C	Capacitor_N	3
Capacitor_N	Nonpolarized Capacitor	C46, C47, C48	1206	Capacitor_N	3
2x25P	2x25P	P1	2x25P SMD 1.27mm - Type 2	2x25P	1
2x08P	2x08P Connector	P2, P3	2x8P SMD 2.54mm Type 2	2x08P	2
2x02P	2x02P Connector	P4, P5	2x2P SMD 2.54mm Type 2	2x02P	2
Led	General Purpose LED	pla	0805_R	Led	1
Resistor	Resistor	R1, R2, R3, R4, R5, R6, R7, R8, R9, R10, R11, R12, R13, R14, R15, R16, R17, R18, R23, R24, R25, R26, R28, R30, R31, R32, R33, R34, R35, R36, R38, R40, R41, R42, R43, R44, R45, R46, R48, R50, R51, R52, R53, R54, R55, R56, R58, R60, R61, R62, R63, R64, R65, R66, R68, R70, R71, R72, R73, R74, R75, R76, R78, R80, R81, R82, R83, R84, R85, R86, R87, R88, R89, R90, R91, R92, R93, R94, R95, R96, R97, R98, R99, R100, R101	0603_R	Resistor	85
Resistor Array 4X	Resistor Array	R19, R20, R21, R22, R27, R29, R37, R39, R47, R49, R57, R59, R67, R69, R77, R79	0603_4X (BCN16)	Resistor Array 4X	16
LMH7322	LMH7322 RSPECL Dual Comparator	U1, U2, U3, U4, U5, U6, U7, U8	LLP24-LMH7322	LMH7322	8